

# SIDESLIDE C-CLAMP

---

C-CLAMP 940K-010FI | C-CLAMP MINI 940K-010FI-M

PRODUCT MANUAL

# TABLE OF CONTENTS

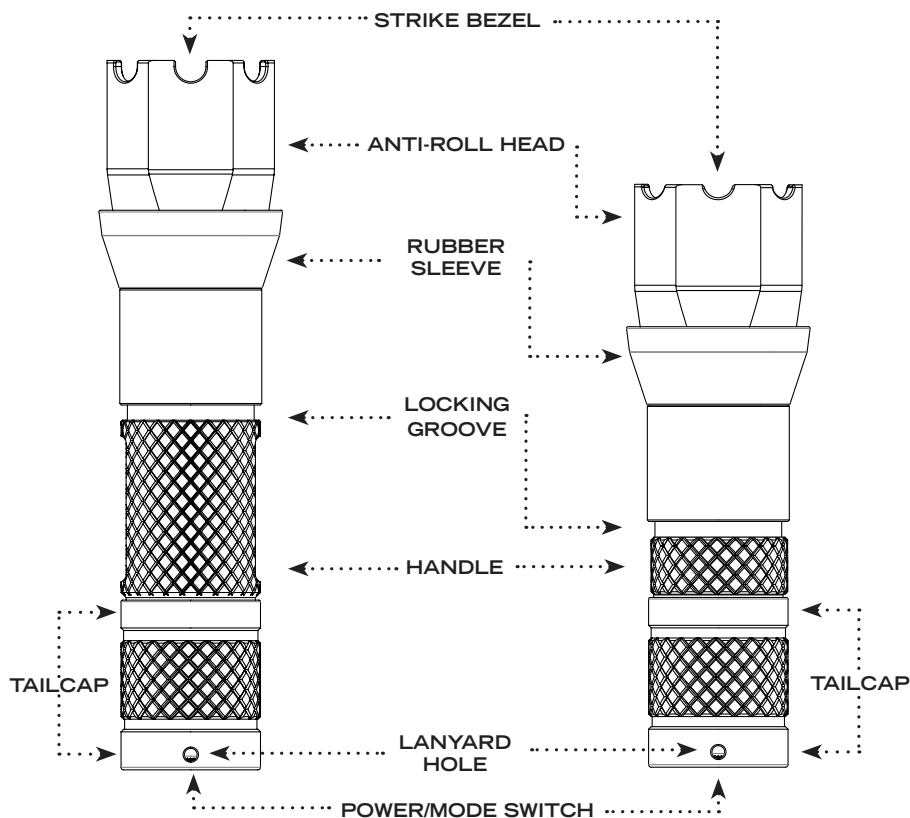
---

<b>INTRODUCTION</b>	
Reference Guide	3
Physical Characteristics & Warnings	4
<b>BATTERY</b>	
Battery Installation and Replacement	5
Battery Life	6
<b>OPERATION</b>	
Operational Modes	6
<b>INSTALLATION</b>	
Inserting and Removing the SideSlide from the Holder	7
Installation of SideSlide Adaptor	8
<b>WARRANTY</b>	9-10
<b>CONTACT FOXFURY</b>	10

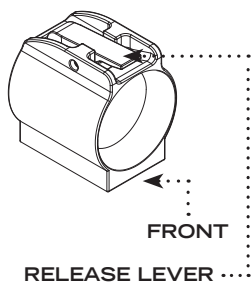
# SIDESLIDE REFERENCE GUIDE

## SIDESLIDE

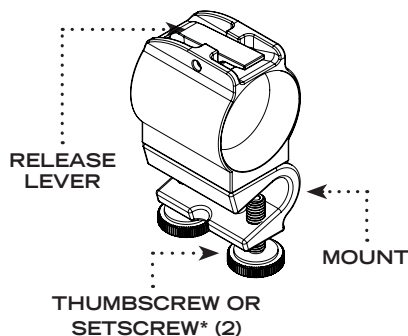
## SIDESLIDE MINI



## HOLDER



## C-CLAMP ADAPTOR



\*Newer model SideSlide C-Clamp and C-Clamp Mini comes with Setscrews instead of Thumbscrews.

# PHYSICAL CHARACTERISTICS

---

Please read below before using your SideSlide as it relays beneficial operating and safety information.

---

SIDESLIDE FLASHLIGHT (940-010FI)	
DIMENSIONS	Length: 5.5 in (140 mm) Head: 1.3 in (33 mm) x 1.3 in (33 mm) Handle Diameter: 1.1 in (28 mm)
WEIGHT (without battery)	5.2 oz (148 g)

---

---

SIDESLIDE MINI FLASHLIGHT (940-013)	
DIMENSIONS	Length: 4.25 in (108 mm) Head: 1.3 in (33 mm) x 1.3 in (33 mm) Handle Diameter: 1.1 in (28 mm)
WEIGHT	4.4 oz (124 g)

---

This application-specific SideSlide Adaptor allow the flashlight to be secured to the Holder for quick and easy hands-free use.

---

C-CLAMP ADAPTOR (85-010)	
DIMENSIONS	1.5 x 1.6 x 2.8 in (38 x 41 x 71 mm)
WEIGHT	3.7 oz (105 g)

---

---

## WARNINGS

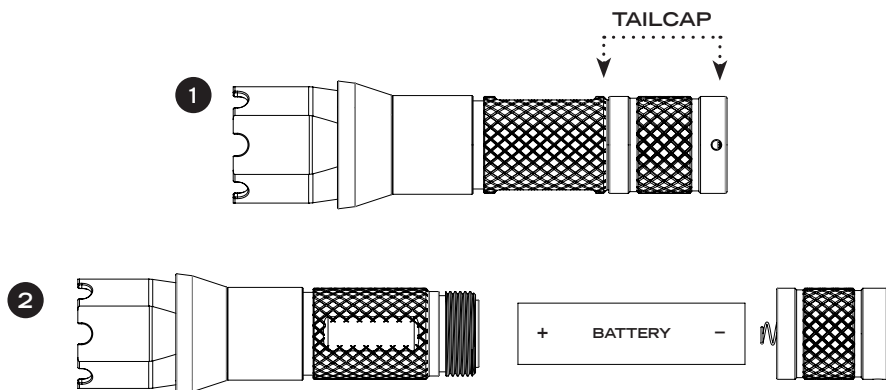
 Do not stare into LEDs for long periods of time or from a close range, less than 2 ft / 0.6 m.

---

# BATTERIES

- ❖ The SideSlide flashlight requires one (1) 18650 battery or two (2) CR123 batteries.
- ❖ The SideSlide Mini flashlight requires one (1) CR123 or RCR123 battery

## BATTERY INSTALLATION AND REPLACEMENT



- 1 Twist the Tailcap in a counter-clockwise direction to remove it.
- 2 Insert the battery with the positive end first. (Respect appropriate polarity when installing).
- 3 Re-install the Tailcap by twisting it in a clockwise direction back onto the Handle. (Make sure the Tailcap is tightly sealed).
- 4 Test the light's performance and function by activating the Power/Mode Switch (located at the end of the Tailcap).

## LITHIUM BATTERY WARNING

- ⚠ FoxFury recommends the use of TacSwan or other high quality protected button top 18650 batteries and the use of Panasonic, Sanyo, Energizer or other high quality CR123 batteries.
- ⚠ Mixing of new and used, or different brand batteries is not recommended as this could lead to leakage or explosion and serious personal injury.
- ⚠ Do not misuse, short-circuit, improperly store or discard, disassemble, expose to water, fire or high temperatures above 212 °F (100 °C).
- ⚠ For more information about battery care, visit <https://www.foxfury.com/resources/product-information/battery-care/>

# BATTERY LIFE

## SIDESLIDE (940K-010FI)

MODE	BATTERY LIFE*	LUMENS
HIGH POWER	2.2 hours	520
LOW POWER	5.3 hours	156
FLASHING	3 hours	520

\*Battery life is measured with two (2) 1400 mAh CR123 batteries. It may vary according to mode selected, battery quality and prevailing ambient conditions

## SIDESLIDE MINI (940K-013)

MODE	BATTERY LIFE**	LUMENS
HIGH POWER	2 hours	250
LOW POWER	4.8 hours	75
FLASHING	3.4 hours	250

\*\*Battery life is measured with one (1) 1400 mAh CR123 battery. It may vary according to mode selected, battery quality and prevailing ambient conditions.

## OPERATIONAL MODES

- ❖ For HIGH mode: Press the Power/Mode Switch once.
- ❖ For LOW mode: Press and hold the Power/Mode Switch for 2.0–2.5 sec.
- ❖ For FLASHING mode: While in LOW mode, press and hold the Power/Mode Switch for an additional 2.0–2.5 sec.

### NOTE:

- ❖ The light does not retain the mode in memory. Once you turn the flashlight ON, you will have to re-select the mode you desire.
- ❖ When the light is ON in any mode, a rear green warning light will flash.

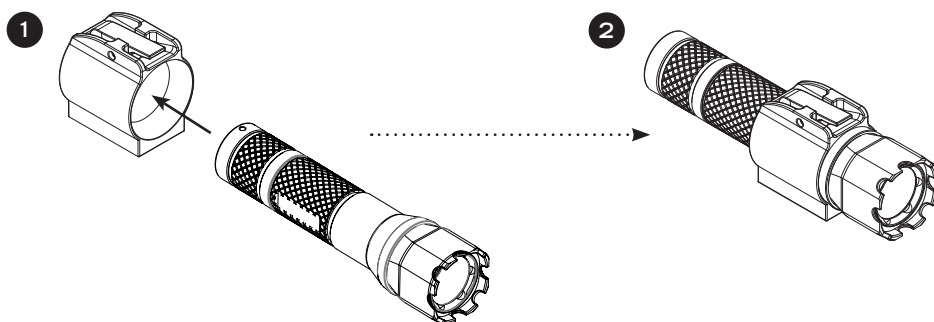
The flashlight is easily securable and removable by using the unique SideSlide Release Lever.

# INSERTING AND REMOVING THE SIDESLIDE FROM THE HOLDER

---

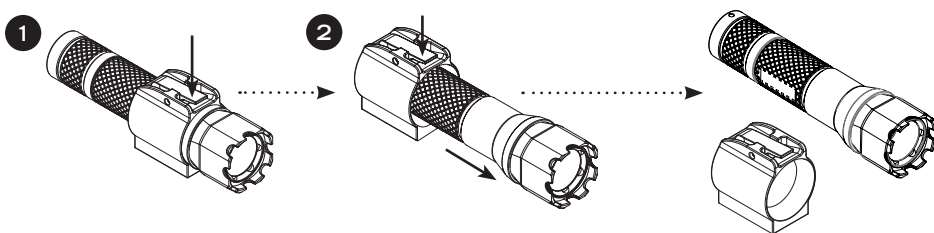
TO INSERT THE FLASHLIGHT INTO THE HOLDER:

- 1 Insert the flashlight by pushing it, Tail Cap first, into the beveled opening on the front of the Holder.
- 2 Once locked, the Release Lever falls into a groove on the handle, securing the flashlight in place.



TO REMOVE THE FLASHLIGHT FROM THE HOLDER:

- 1 Press and hold the Release Lever.
- 2 While keeping the Release Lever pressed, pull flashlight out of the Holder.



# INSTALLATION OF YOUR SIDESLIDE ADAPTOR

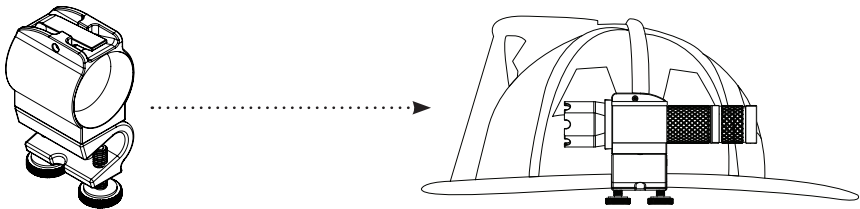
---

The C-Clamp can be mounted on the right or left side of the helmet, above or below the brim (based on user preference).

## MOUNTING ABOVE THE BRIM (RECOMMENDED BY FOXFURY):

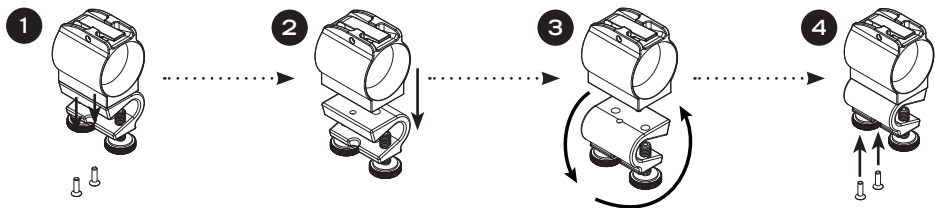
### TO MOUNT ON THE LEFT SIDE OF A HELMET:

Place C-Clamp Adaptor on helmet at desired location and tighten Thumbscrews or Setscrews with provided 3 mm Hex Key.



### TO MOUNT ON THE RIGHT SIDE OF A HELMET:

There are two (2) screws which allow you to separate the C-Clamp Mount from the Holder and flip it 180° so that it can be worn on the right side of a helmet.



- 1 Using a 2 mm AF Hex Key\* twist the screws counter-clockwise to remove.
- 2 Pull C-Clamp Mount away from Holder.
- 3 Spin C-Clamp Mount 180°.
- 4 Align holes on the C-Clamp Mount with holes on the Holder. Re-insert screws and tighten with Hex Key, turning clockwise until secured.  
OPTIONAL TIP: Apply Loctite™ as needed to secure screws.

\*2 mm AF Hex Key not included



# WARRANTY AND OTHER INFORMATION

---

## PRODUCT DURABILITY



Meets NFPA Fire Resistant Requirements.

## REFLECTIVE STICKER

For your safety, and increased visibility, a reflective sticker (enclosed in box) may be placed on the side of the SideSlide

## CARE/CLEANING

Your FoxFury product is a professional tool, but regular maintenance and care of your light will maximize performance for you. As needed, wash your FoxFury product using a soft washcloth, clean water and a mild soap. Be sure that the flashlight's Tailcap is SEALED before washing. When done, pat dry with a damp cloth.

## AVAILABLE ACCESSORIES

- ❖ 18650 Rechargeable Battery, P/N 70-18650T
- ❖ Battery Charger - AA, 18650, P/N 600-155
- ❖ C-Clamp Adaptor, P/N 85-010
- ❖ Bolt Adaptor, P/N 85-011
- ❖ Picatinny Adaptor, P/N 85-012
- ❖ SideSlide Flashlight P/N 940-010FI
- ❖ SideSlide Mini Flashlight P/N 940-013

## WARNINGS

FoxFury, LLC is not responsible for the incorrect use of any FoxFury Lighting product.

- ❖ Lights are strong enough to cause damage to the human eye.
- ❖ Do not stare into LEDs for long periods of time or from a close range (less than 2 ft).
- ❖ FoxFury, LLC is not responsible for any injury or damage caused during the use of this product.
- ❖ Usage of this product must be supervised by an adult when it is being used by a minor.
- ❖ Any FoxFury product should be operated at speeds safe enough to maneuver around surrounding obstacles.
- ❖ Do not use under the influence of drugs or alcohol.

## LIMITED LIFETIME WARRANTY

FoxFury, LLC ("FoxFury") warrants this product to be free from defects in material for a lifetime of use except for batteries, LEDs, abuse, and normal wear. We will repair or replace this product should we determine it to be defective. This limited lifetime warranty excludes rechargeable

batteries, chargers, switches, and electronics, which have a 2-year warranty with proof of purchase.

This limited lifetime warranty is given only to the original end user of the accompanying product. If you purchased a product from someone other than an authorized FoxFury reseller/distributor or if the product was used, (including but not limited to demo models, show models or refurbished product by someone other than FoxFury) prior to your purchase, you are not the Original Purchaser and the product that you purchased is not covered by this warranty. This limited warranty is VOID if this Product has been altered or modified in any way (including but not limited to attempted warranty repair without authorization from Foxfury and/or alteration/removal of the serial number). To expedite warranty concerns, we encourage the end user to register their FoxFury product at [www.foxfury.com/resources/product-information/product-registration/](http://www.foxfury.com/resources/product-information/product-registration/)

THIS IS THE ONLY WARRANTY, EXPRESSED OR IMPLIED, INCLUDING ANY WARRANTY OF MERCHANTABILITY OR FITNESS FOR A PARTICULAR PURPOSE. INCIDENTAL, CONSEQUENTIAL OR SPECIAL DAMAGES ARE EXPRESSLY DISCLAIMED EXCEPT WHERE SUCH LIMITATION IS PROHIBITED BY LAW.

You may have other specific legal rights which vary by jurisdiction. Go to [www.foxfury.com/resources/product-information/warranty/](http://www.foxfury.com/resources/product-information/warranty/) for a complete copy of the warranty. Retain your receipt for proof of purchase.

## CONTACT FOXFURY

FoxFury, LLC  
Oceanside, CA 92056 USA

**Tel:** 760.945.4231

**Email:** [service@FoxFury.com](mailto:service@FoxFury.com)

**Web:** [FoxFury.com](http://FoxFury.com)

All FoxFury products are designed in Oceanside, CA. All FoxFury products are manufactured with the highest quality USA and foreign parts. Products are assembled in either FoxFury's controlled plant in Asia or the USA, under strict quality control.

## CALIFORNIA PROPOSITION 65

This product can expose you to chemicals including Lead and DEHP, which are known to the State of California to cause cancer and birth defects or other reproductive harm. For more information go to [www.P65Warnings.ca.gov](http://www.P65Warnings.ca.gov).

