



**BREAKTHROUGH INTRINSIC SERIES  
OPERATING INSTRUCTIONS**

380-FF01-BT2-BL BT2-IS Intrinsic Series, Black

Please read the below before using your Breakthrough Intrinsic Right Angle Flashlight, as it relays beneficial operating and safety information.

**PHYSICAL CHARACTERISTICS:**

Dimensions: 2.8" x 3.7" x 7.5" tall (71 mm x 94 mm x 190 mm)  
Head diameter: 2.8" (71 mm)  
Weight: 19.7oz (558.5g)

**ACCEPTABLE BATTERY TYPES:**

The Breakthrough Intrinsic Light requires four (4) AA batteries each.

**APPROVED Alkaline battery types:**

- Duracell Coppertop AA 1.5v Alkaline, MN1500
- Duracell Plus Power AA 1.5v Alkaline, MN1500
- Energizer Industrial AA 1.5v Alkaline, EN91
- Energizer AA 1.5v Alkaline, E91

**APPROVED Rechargeable NiMH battery types:**

- Duracell AA 1.2v NiMH, DC1500 HR6

**BATTERY INFORMATION AND WARNINGS:**

- Potential electrostatic charging hazard.
- Mixing of used and new, or different brand batteries is not permitted as this could lead to leakage or explosion.
- To prevent ignition of a hazardous atmosphere, batteries must only be changed in an area known to be non-hazardous.
- Do not replace batteries or battery pack when an explosive gas atmosphere may be present.

\*When operating the light, if an electrostatic charge builds, this can be safely discharged by touching the flashlight body to a grounded (earth) object. Do not attempt to discharge to ground with the metal clip.

**CERTIFICATIONS FOR HAZARDOUS LOCATION:**

UL Class I Div 1&2 GRP A,B,C & D, T5  
CLASS I, ZONE 0, AEx ia IIC T5 Ga  
IECEX Ex ia IIC T5 Ga

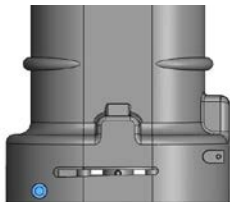
UL913, Seventh Edition UL8750:2015  
IEC60079-0 IEC60079-11

**BATTERY INSTALLATION/REPLACEMENT:**

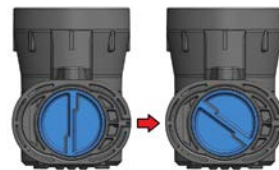
**\*Only open battery compartment in area known to be non-hazardous.**

**Unlock/Lock the battery compartment.**

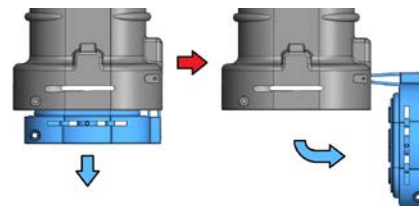
1. To open the battery compartment: insert the supplied Allen (Hex) Key (2.5mm) in the hole and turn the Allen Key counter-clockwise to loosen the screw and unlock the lower cap. Note that the screw will be retained in the main body of the flashlight.



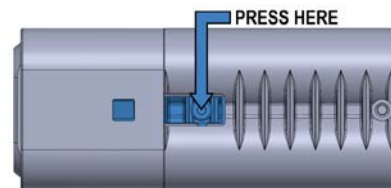
2. Twist the bottom grip of the lower cap counter-clockwise to unlock



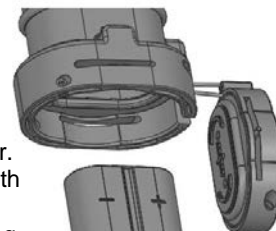
3. Pull the lower cap down and then pull it to the side and out of the way for access to the battery holder.



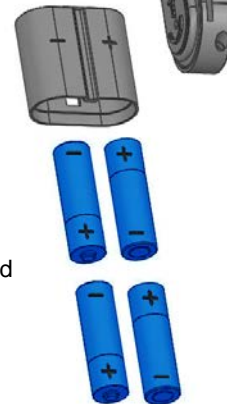
4. Remove battery holder. Press button to release lid.



5. Install four (4) AA batteries in the battery holder. NOTE: Respect appropriate polarity when installing.



6. Reassemble the battery holder. Note the notch direction on both halves of the battery holder case and match them up during reassembly. A "click" will be heard when properly fit.



7. Reinsert the holder inside the battery compartment. Match case notch to the body inside the BT unit. Replace the cap, insert and tighten Hex Key, and turn cap grip clockwise until it stops. NOTE: Make sure the battery pack is closed properly to maintain a water tight seal.

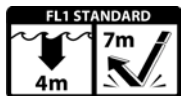
8. Test the light's performance by activating the power/mode switch located on the right hand side of the light.



**OPERATIONAL MODES:**

MODE	DESCRIPTION
1	Press switch for High mode
2	Press and Hold switch (2.0-2.5 seconds) for Low
3	Press and Hold switch for Blinker (2/second) mode

**NOTE:** The BT does not retain the mode in memory. Once the BT is turned back on, you will have to re-select the preferred mode.

**PRODUCT DURABILITY, ENVIRONMENTAL CONSTRAINTS & ADDITIONAL CERTIFICATIONS:**

- Meets NFPA 1971-2007 Fire Resistant Requirements: 500°F / 260°C for 30 minutes

**CARE/CLEANING/PREVENT POTENTIAL ELECTROSTATIC SHOCK:**

Your FoxFury is a professional tool, but regular maintenance and care of your light will maximize performance. When cleaning your FoxFury light, use a damp soft washcloth, clean water and a mild soap. Be sure that the battery compartment is sealed before washing. When done, pat dry with a damp cloth. Reapply a silicone based lubricant onto the o-ring or gasket of the battery pack at least once per year as regular maintenance and after cleaning. This keeps the o-rings and gaskets pliable and allows them to maintain the correct seal.

**BATTERY PACK MAINTENANCE:****DEALING WITH CORROSION FROM LEAKING BATTERIES**

Battery leakage may cause "corrosion" to build in the battery pack contacts, causing light not to function properly.

In case of presence of Corrosion in the battery pack contacts, please follow the suggested steps listed below:

1. Mix 50% vinegar and 50% water.
2. Remove batteries from the battery pack (battery holder).
3. Use the combination and apply to the inside of battery pack with soaked cotton swab or cloth. Let soak for 5 minutes.
4. Clean fluid from inside the battery pack and dry it properly with a paper towel, and a blow dryer (make sure no liquid residue is left inside battery pack).
5. Replace your batteries and test the light's function.
6. Repeat as needed.

**NOTE:** Corrosion from leaking batteries is not covered by warranty.

**WARNINGS: IMPORTANT**

FoxFury, LLC is not responsible for the incorrect use of any FoxFury Lighting product.

- Lights are strong enough to cause damage to the human eye.
- Do not stare into LEDs for long periods of time or from a close range (less than 2 feet).
- FoxFury, LLC is not responsible for any injury or damage caused during the use of this product.
- **WARNING: Substitution of components may impair intrinsic safety.**
- **WARNING: To prevent ignition of a hazardous atmosphere, batteries must only be changed in an area known to be nonhazardous.**
- **WARNING: To prevent ignition of flammable or combustible atmosphere, disconnect power before servicing.**
- **If the unit is dropped from a height greater than 8ft./2.4m, it is recommended that the unit is turned off until it can be inspected for a cracked or broken lens, or related damage.**
- Usage of this product must be supervised by an adult when it is being used by a minor.
- Any FoxFury product should be operated at speeds safe enough to maneuver around surrounding obstacles, this product has a NARROW beam, an additional light source is recommended.
- Do not use under the influence of drugs or alcohol.

**LIMITED WARRANTY****FoxFury Limited Warranty & Customer Care Information**

FoxFury, LLC ("FoxFury") warrants to the purchaser of this product ("Buyer") that for a period of two years following purchase, this product will be free from defects in material and workmanship and will function in substantial compliance with FoxFury's written specifications for this product as specified in this instruction manual or on FoxFury's website located at [www.foxfury.com](http://www.foxfury.com). Buyer's exclusive remedy shall, in any case, be limited, at FoxFury's election, to:

A) replacement of the defective product; or B) refund of the purchase price for this product. THE FOREGOING WARRANTY IS THE ONLY WARRANTY MADE BY FOXFURY WITH RESPECT TO THIS PRODUCT. TO THE EXTENT ALLOWED BY APPLICABLE LAW, THERE ARE NO REPRESENTATIONS OR WARRANTIES OF ANY KIND BY FOXFURY, EXPRESS OR IMPLIED, WITH RESPECT TO THE CONDITION OR PERFORMANCE OF THIS PRODUCT, INCLUDING, BUT NOT LIMITED TO, MERCHANTABILITY OR FITNESS FOR A PARTICULAR PURPOSE.

**This limited warranty shall not apply if this product is not stored, handled, installed or used in strict accordance with manufacturer's specifications and instruction manuals, or which has been subject to misuse, alteration, negligence or accident.**

1. The damaged part or product must be returned to FoxFury **PRIOR TO** any replacement. Shipping costs are the responsibility of the claimant.
2. You must obtain a return authorization (RMA) number from FoxFury prior to returning products. FoxFury is not responsible for any damage incurred while in transit.
3. Buyer will be required to show proof of purchase – via fax or email attachment -- No Exceptions --.
4. Any modifications to the light or battery pack automatically voids all warranties on this product.

All warranty inquiries should be directed to FoxFury's Customer Service Department, which handles all warranty or repair related inquiries.

**TO THE EXTENT ALLOWED BY APPLICABLE LAW: (A) IN NO EVENT, WHETHER DUE TO BREACH OF WARRANTY HEREUNDER OR ANY OTHER CAUSE WHATSOEVER, SHALL FOXFURY BE LIABLE FOR OR OBLIGATED IN ANY MANNER TO PAY CONSEQUENTIAL, INCIDENTAL OR INDIRECT DAMAGES, INCLUDING, BUT NOT LIMITED TO, LOSS OF PROFITS, COST OF SUBSTITUTE PRODUCTS AND PERSONAL INJURY OR PROPERTY DAMAGE, WHETHER SUCH CLAIM IS BASED ON CONTRACT OR TORT OR ANY OTHER THEORY OF LAW, AND (B) FOXFURY'S ONLY DUTIES IN CONNECTION WITH THE SALE OF THIS PRODUCT SHALL BE TO HONOR THE LIMITED WARRANTY SET FORTH HEREIN. TO THE EXTENT THAT THIS LIMITED WARRANTY IS INCONSISTENT WITH APPLICABLE LAW, THIS STATEMENT SHALL BE DEEMED MODIFIED TO BE CONSISTENT WITH SUCH APPLICABLE LAW.**



FoxFury, LLC

Oceanside, CA 92056 USA

Toll-Free: 844-FOXFURY

Tel: 760.945.4231

Fax: 760.758.6283

Email: [custserv@foxfury.com](mailto:custserv@foxfury.com)

[www.FoxFury.com](http://www.FoxFury.com)

All FoxFury products are designed in Oceanside, CA. All FoxFury products are manufactured with the highest quality USA and foreign parts. Products are assembled in either FoxFury's controlled plant in Asia or the USA, under strict quality control.